

THE RAVELLO



CRAFTSMAN



TRADITIONAL



FARMHOUSE

FEATURES:

3 - 4 Bedrooms
2.5 Bathrooms
2,100 - 2,666 sq ft
Modern Floor Plan,
Private Study

SALES COUNSELOR: KELLY MORAN

757-240-8680 • NR@napolitanohomes.com

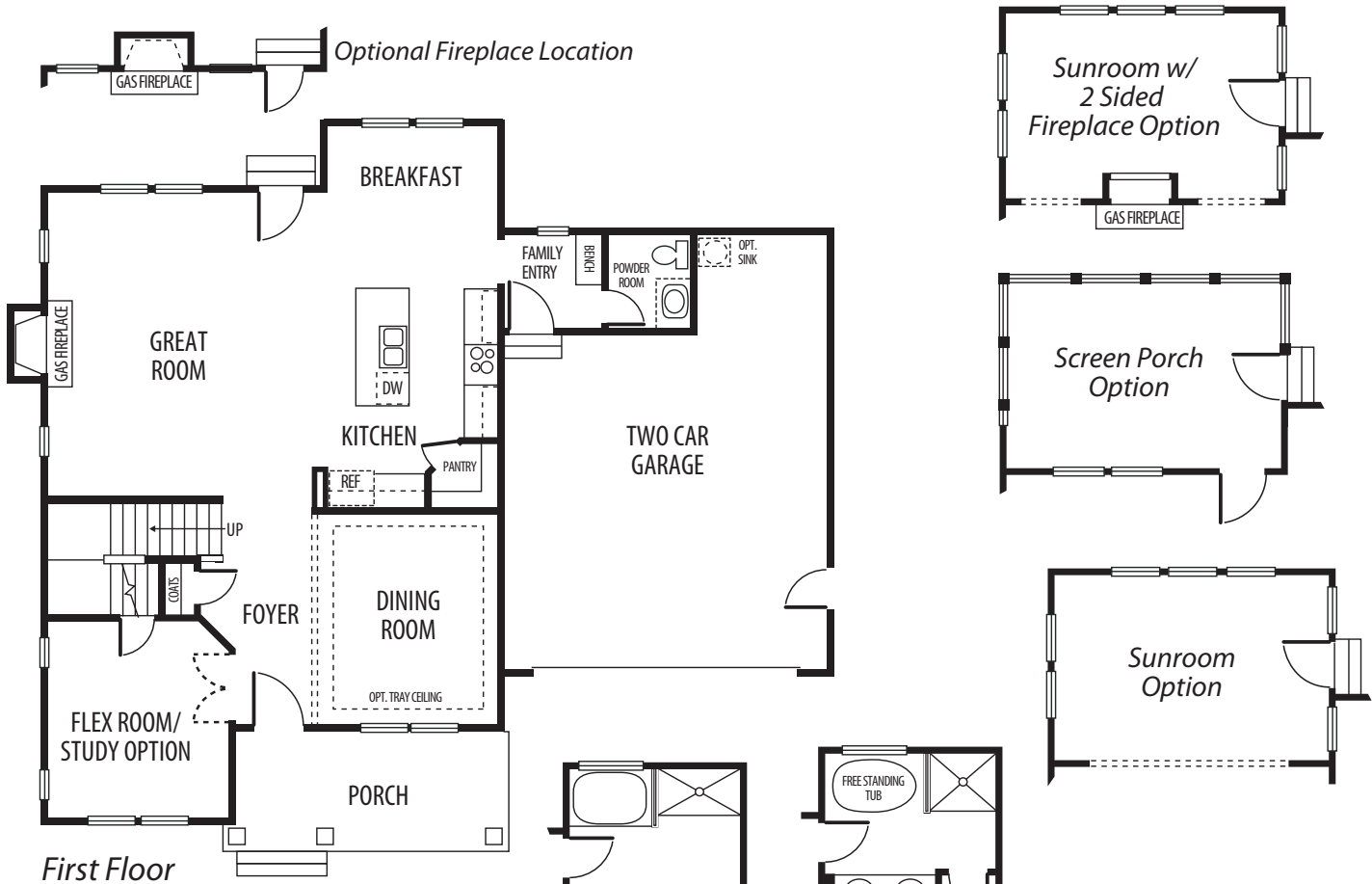
www.napolitanohomes.com/new-homes/suffolk/community/nr/

MODEL HOME & SALES OFFICE: 104 Secretariat Drive, Suffolk, VA 23435

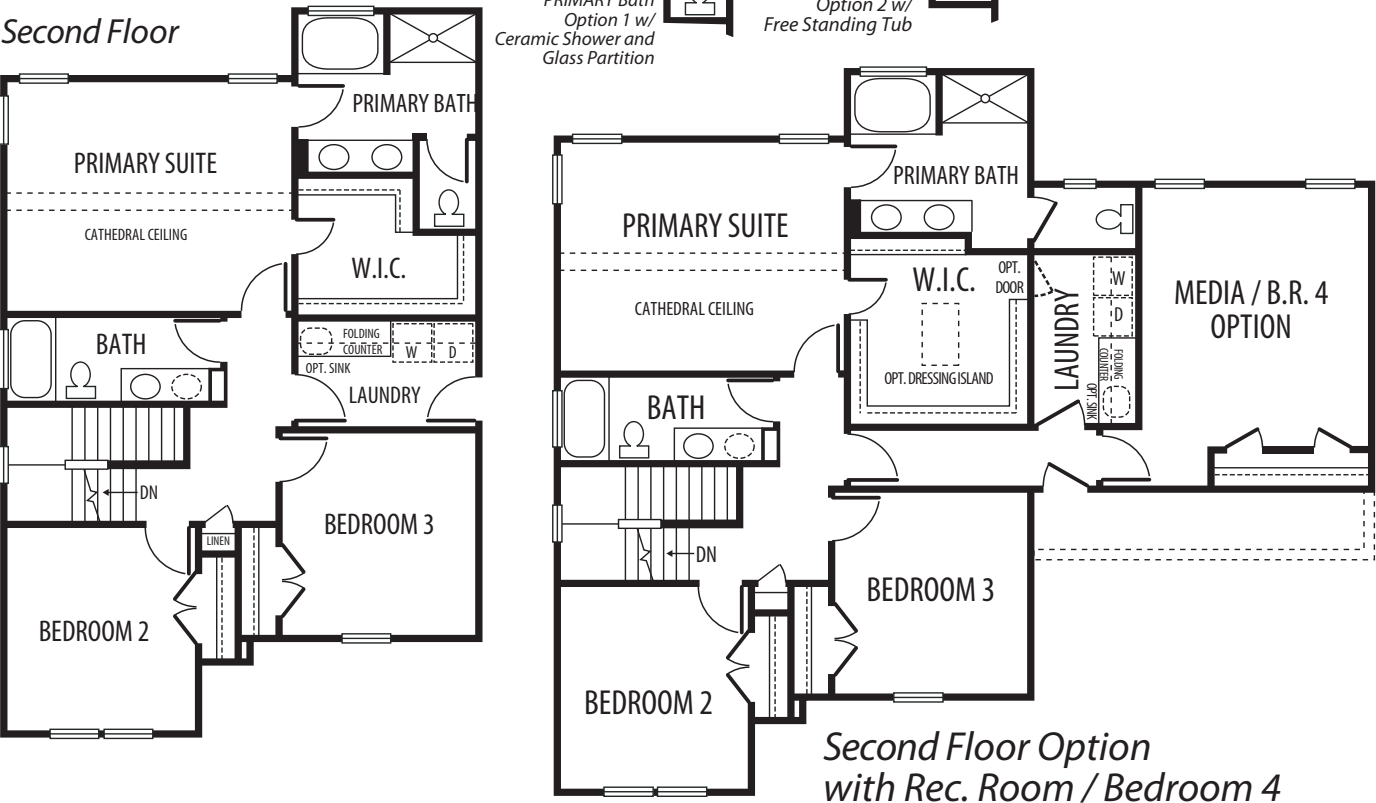
© Napolitano Homes, All Rights Reserved. All prices, plans, elevations, features, specifications, and materials are subject to change without notice or obligation. Illustrations and floor plans are artist's renderings, not architectural blueprints. Options and extra-cost upgrades such as stone and brick may be shown and may vary by neighborhood. Please consult with your sales counselor prior to writing an offer.



THE RAVELLO



Second Floor



*All floorplans based on Traditional Elevation