

# THE NOVARO



## FEATURES:

4-5 Bedrooms  
2.5-3 Bathrooms  
2,020 - 2,358 sq ft  
Efficient open concept

## SALES COUNSELOR: KELLY MORAN

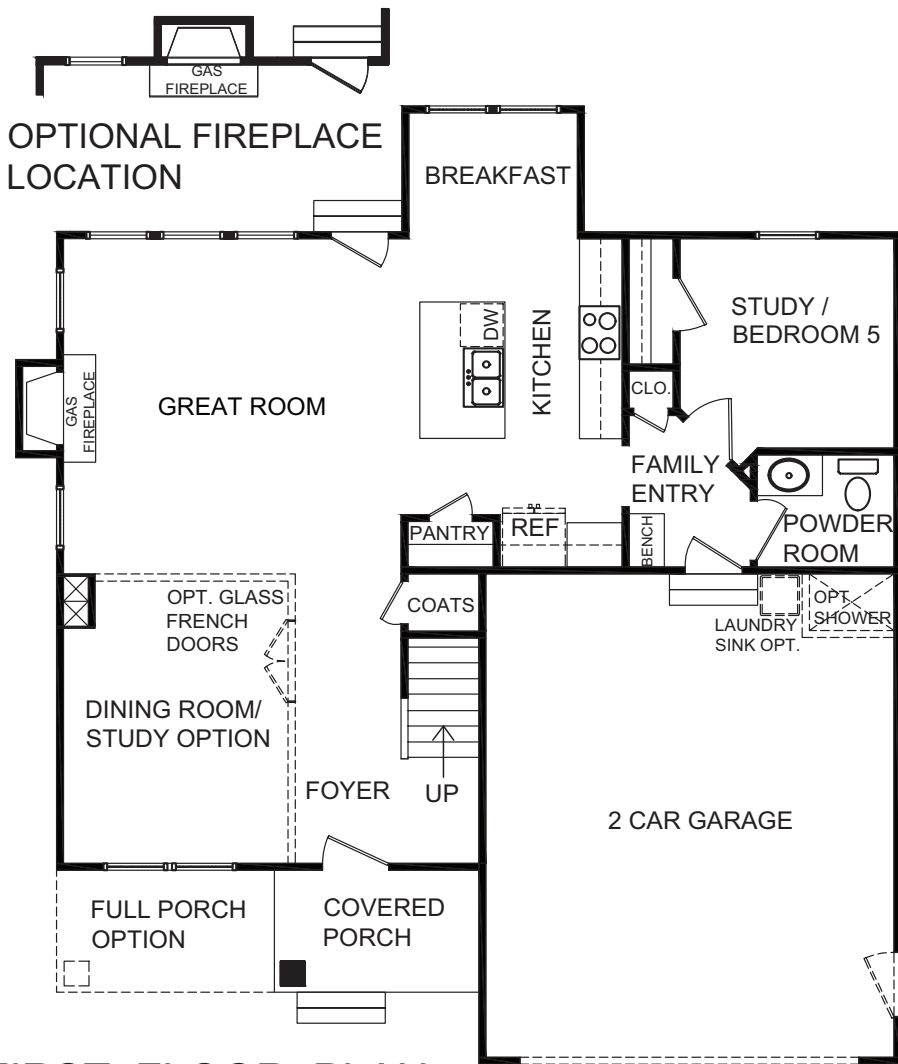
757-240-8680 • [NR@napolitanohomes.com](mailto:NR@napolitanohomes.com)  
[www.napolitanohomes.com/new-homes/suffolk/community/nr/](http://www.napolitanohomes.com/new-homes/suffolk/community/nr/)

**MODEL HOME & SALES OFFICE:** 104 Secretariat Drive, Suffolk, VA 23435

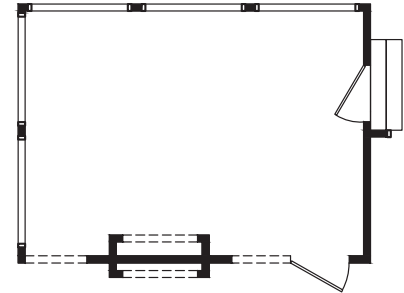
© Napolitano Homes, All Rights Reserved. All prices, plans, elevations, features, specifications, and materials are subject to change without notice or obligation. Illustrations and floor plans are artist's renderings, not architectural blueprints. Options and extra-cost upgrades such as stone and brick may be shown and may vary by neighborhood. Please consult with your sales counselor prior to writing an offer.



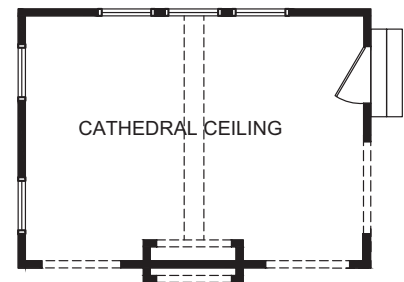
# NOVARO



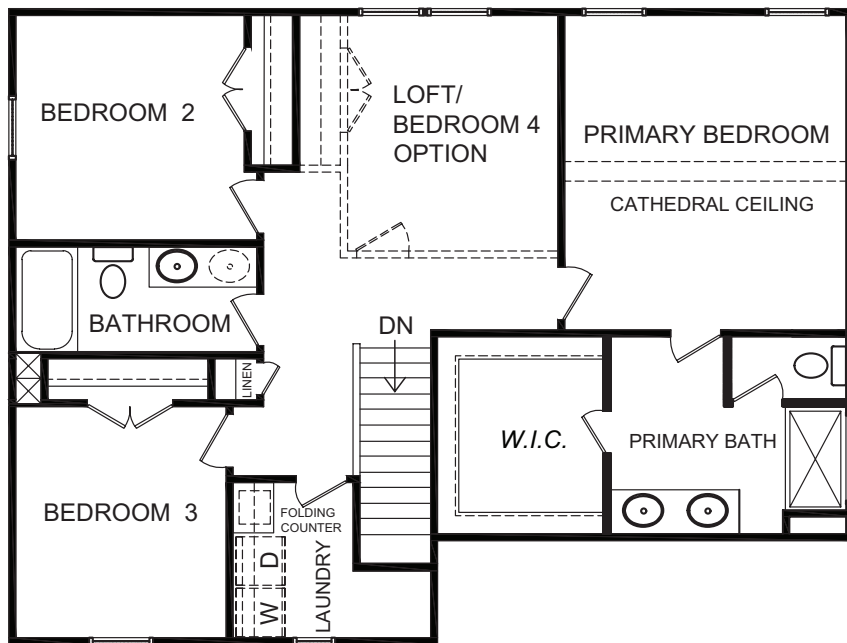
FIRST FLOOR PLAN



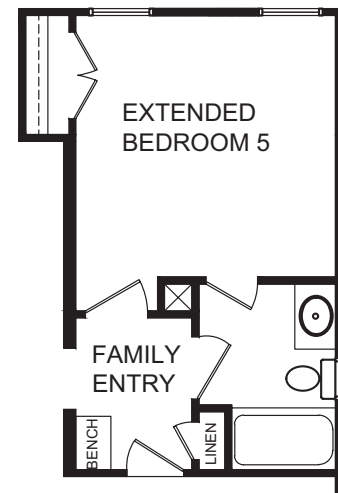
SCREEN PORCH OPTION  
W/ OPT. INDOOR OUTDOOR  
FIREPLACE



SUN ROOM OPTION W/  
2 SIDED FIREPLACE OPTION



SECOND FLOOR PLAN



EXTENDED  
BEDROOM 5  
W/ FULL BATH  
OPTION