

THE AVELLINO



FEATURES:

Ranch with Room Over Garage
3 - 4 Bedrooms
2 - 3.5 Bathrooms
2,100 - 2,362 square feet

SALES COUNSELOR: KELLY MORAN

757-240-8680 • NR@napolitanohomes.com

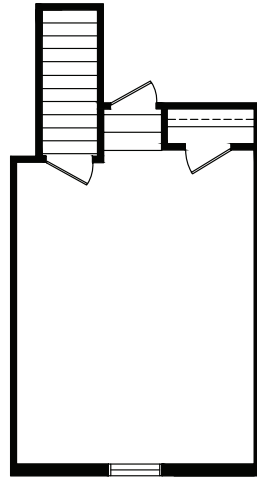
www.napolitanohomes.com/new-homes/suffolk/community/nr/

MODEL HOME & SALES OFFICE: 104 Secretariat Drive, Suffolk, VA 23435

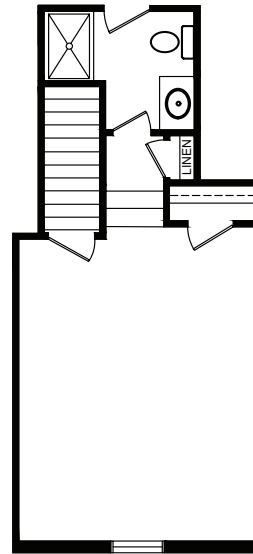
Exclusive Agent Representing the Seller. All information is believed to be accurate but is not warranted and is solely a guide to prospective purchasers who should satisfy themselves by inspection or otherwise as to the correctness of this information. © 2020 BHH Affiliates, LLC. An independently owned and operated franchisee of BHH Affiliates, LLC. Berkshire Hathaway HomeServices and the Berkshire Hathaway HomeServices symbol are registered service marks of HomeServices of America, Inc. © Equal Housing Opportunity. Berkshire Hathaway HomeServices Towne Realty is an affiliate of TowneBank. © Napolitano Homes, All Rights Reserved. All prices, plans, elevations, features, specifications, and materials are subject to change without notice or obligation. Illustrations and floor plans are artist's renderings, not architectural blueprints. Options and extra-cost upgrades such as stone and brick may be shown and may vary by neighborhood. Please consult with your sales counselor prior to writing an offer.



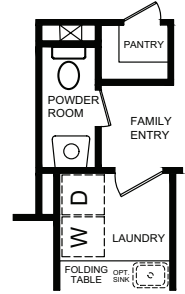
AVELLINO



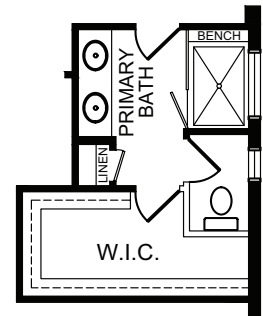
ROOM OVER
GARAGE



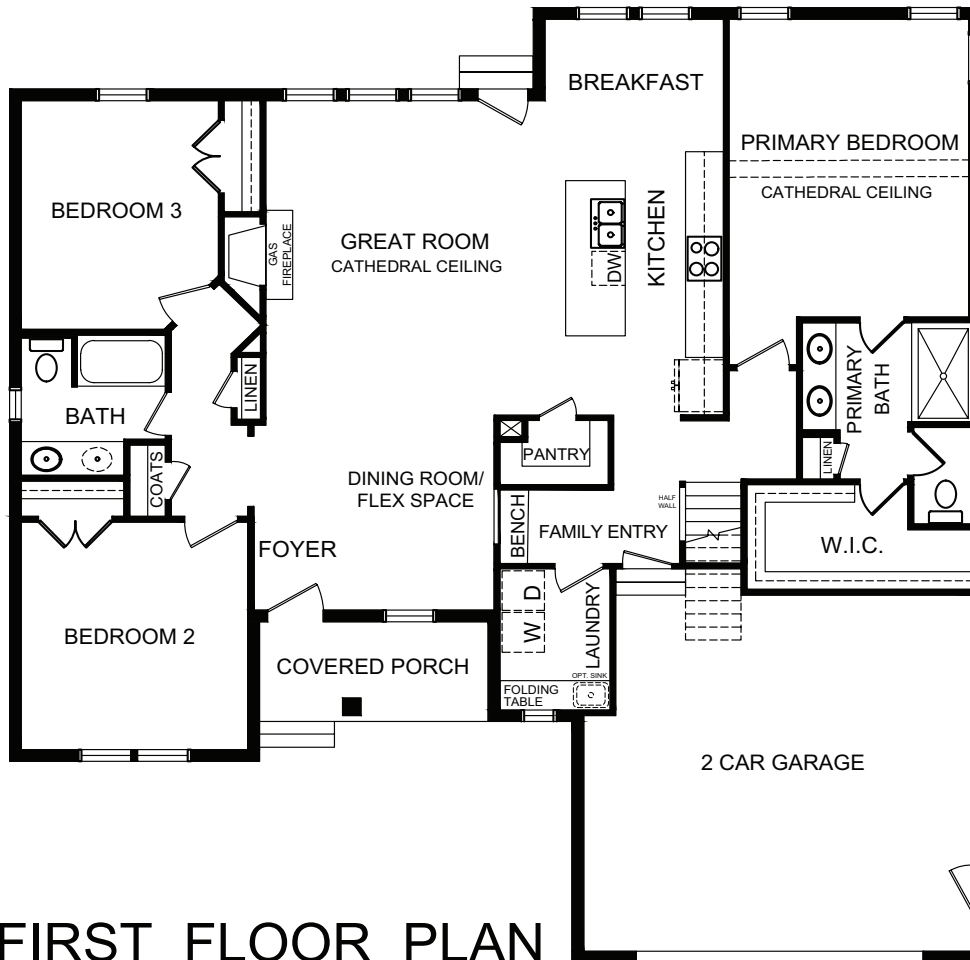
BEDROOM 4/ W/
FULL BATH OPTION



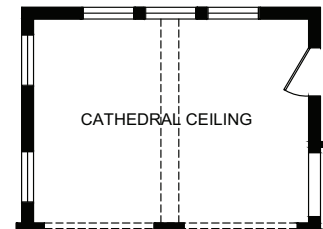
POWDER
ROOM OPTION



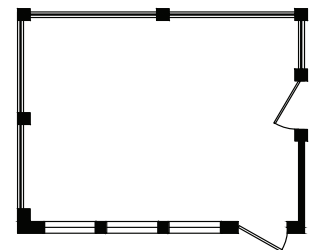
OPT. PRIMARY BATH W/
CERAMIC TILE SHOWER



FIRST FLOOR PLAN



SUNROOM OPTION



SCREEN PORCH
OPTION



NAPOLITANO HOMES
~EST. 1977~



BERKSHIRE HATHAWAY | Towne Realty
HomeServices

*All floorplans based on Traditional Elevation

REV 8.27.2021